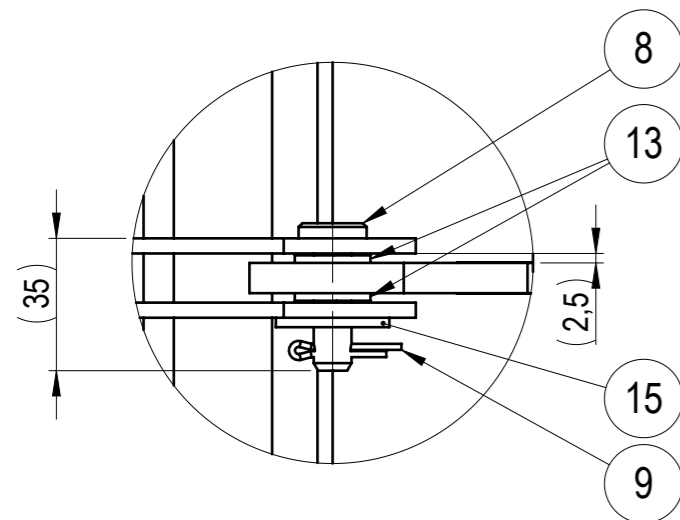
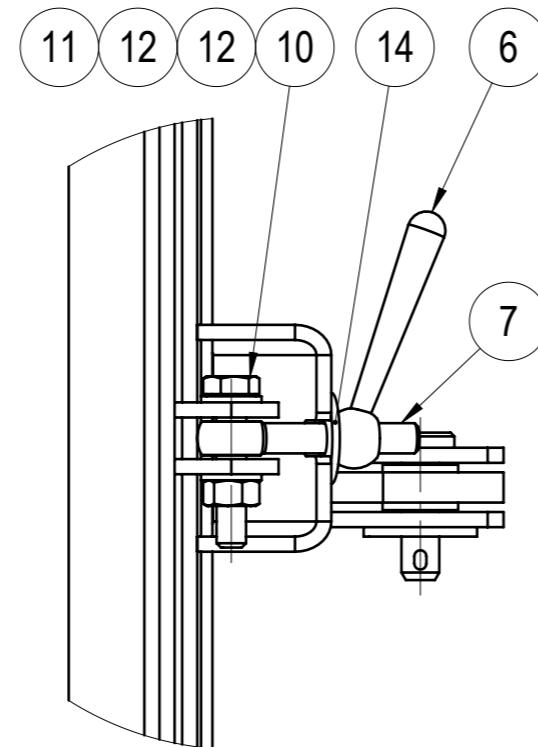


DETAIL F
SCALE 1 : 2



DETAIL H
SCALE 1 : 2



NO.	PART NO	DESCRIPTION	MATERIAL	PROCESSING	REVISION	WEIGHT	QTY
1	105-30221-00	Door	-	WLD PNT		28.45	1
2	105-30222-00	Frame	-	WLD PNT		13.16	1
3	588.7788 L=842	Rubber D profile self adhesive (Fixxprofile)	Micropore rubber	COTS CND		0.04	2
4	588.7788 L=866	Rubber D profile self adhesive (Fixxprofile)	Micropore rubber	COTS CND		0.04	2
5	Abus 65/40	Brass Padlock	-	COTS		0.15	1
6	DIN 99 M8	Clamping lever	Black Oxide	COTS		0.03	2
7	DIN 444 M8x50_32	Swing bolt	Black Oxide-5.8	COTS		0.03	2
8	ISO 2341 B 10x35	Clevis pin	EZn	COTS		0.03	2
9	DIN-94-D3.2x20-EZn	Split pin	EZn	COTS		1.75	2
10	ISO4014 (DIN931) M8x40	Hex bolt with shank	HDG-8.8	COTS		0.02	2
11	ISO4032 (DIN934) M8	Hex nut	HDG-8	COTS		0.01	2
12	ISO7089 (DIN125) M8	Plain Washer	HDG-HV200	COTS		0.00	4
13	ISO7089 (DIN125) M10	Plain Washer	Nylon	COTS		0.00	4
14	ISO7093 (DIN9021) M8	Large plain washer	HDG-HV200	COTS		0.01	2
15	ISO7093 (DIN9021) M10	Large plain washer	HDG-HV200	COTS		0.01	2
16	Wood screw d4.5x25	ESSVE Wafer head screw Ph2	CorrSeal	COTS		0.00	20

WEMPS
ENGINEERING SERVICES

MATERIAL	WEIGHT	DEBURR AND BREAK SHARP EDGES	REVISION	DATE
-	42.297 Kg	DO NOT SCALE DRAWING		07.02.2025
SURFACE PROTECTION	MACHINING	THERMAL CUTTING	WELDING	SCALE
-	ISO 2768 mK	ISO 9013 221	ISO 13920 BF	1:10
				FORMAT
				A3

NAME	SIGNATURE	PART NO.	105-30220-00	
Designed by	D. Dislers	DESCRIPTION		
Drawn by	D. Dislers	Thin Access hatch		
Technical ref.				SHEET 1/1